



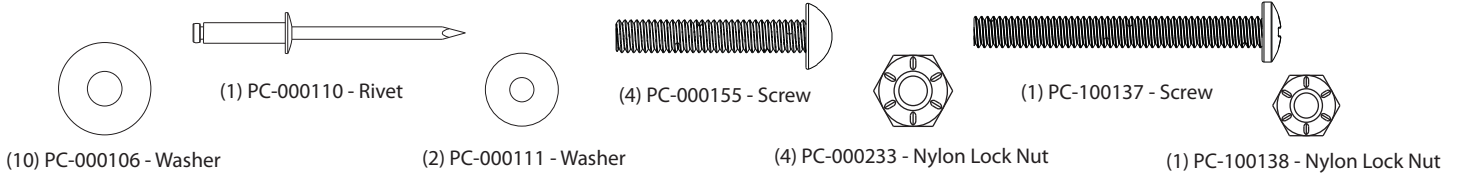
FWD1 to FWD2 Fresh Water Delivery System FWD2-0501 Flojet Conversion Instructions

~~Assembly Tools Required~~

- Phillips Screwdriver
- Wire Crimpers
- Rivet Gun
- Drill with 1/2", 13/64" and 5/32" Bits
- Slotted Screwdriver
- Wire Cutters
- Channel Lock
- Pliers
- Needle Nose Pliers
- Teflon Plumbers Tape
- Socket Wrench with 3/8" and 11/32" Sockets
- Scissors
- Scotch Tape

We recommend reading through the entire booklet prior to proceeding with installation, service or maintenance.

Full Size Scale Fasteners



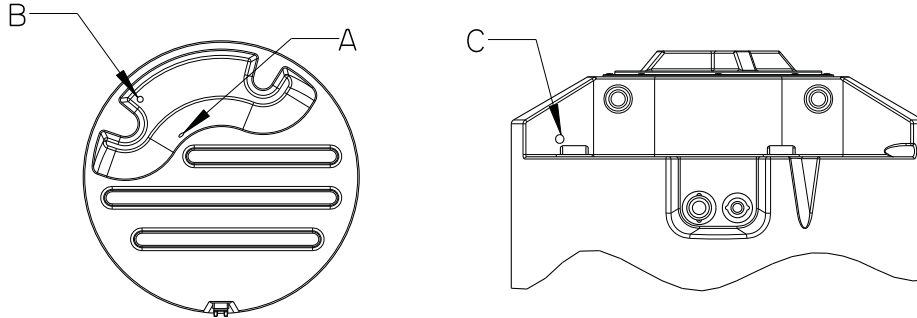
Instructions

Step 1: Disconnecting the Pump

Disconnect the power and drain the tank. Using a Phillips Screwdriver, loosen the (2) PC-000155 - Screws from the Pump cover and remove. Using a slotted screwdriver loosen and remove the PC-000351 - Hose Clamp and disconnect the PC-100313 - Elbow from the welded-in 3/4" raised pipe fitting on the left hand side of the PC-000611 - Shurflo Pump. Unscrew the PC-100312 - Wingnut Swivel Elbow from the pump and remove along with the 3-1/2" tube with hose clamp. Remove the Hatch cover and unscrew the 52" PVC intake pipe and remove. Disconnect the PC-000650 - Liquid Level Switch wire leads from the PC-000632 - Relay Mouser inside the electrical box. Unscrew the PVC pipe with the Liquid Level Switch/Reducer and remove. *Discard the two elbows, two hose clamps, 3-1/2" tube, two PVC pipes and the Liquid Level Switch/Reducer.* Disconnect the pump from the PC-000632 - Relay Mouser and PC-000660 - GFCI cord. Unscrew the (4) PC-000155 - Screws from the PC-000611 - Pump and the (2) PC-000166 - Screws from the electrical box. *Discard the Pump and Electrical Box.*

Step 2: Modifying the Tank/Using the Template

Using a 1/2" drill bit, drill two holes in the bottom of the tank (*labeled A and B in the diagram below*). Drill an additional hole at the top of the tank (*labeled C in the diagram below*). **IMPORTANT: Make sure not to place hole "C" too close to the left edge of the wall, or the cover will not close.** Locate the template drawing provided in the parts bag and cut it out and place it on the tank shelf so that the two holes for the cover screws line up with the corresponding circles on the drawing. Secure the template in place using either scotch tape or the (2) PC-000155 - Screws for the cover. Using a 13/64" bit, drill one hole at each of the four drill spots on the template labeled "Flojet PUMP 13/64". Use a 5/32" bit to drill the final two holes labeled "5/32 DIA."



Step 3. Inserting the Grommets & Tubing

Insert one PC-000415 - Grommet into each of the 1/2" holes at the bottom of the tank. **NOTE: Using liquid soap will help lubricate the tubing when feeding through the grommets.** Begin feeding the CT38-075 tubing through the grommet closest to the center of the tank (*the location marked A in Step 2 diagram*) until the tubing extends approximately 1/2" past the grommet. Feed the tube through the other grommet in the bottom of the tank until the curvature of the tube does not extend below the bottom surface of the tank. Insert a grommet into the 1/2" hole at the top of the tank from the inside pushing outward to secure the grommet in the hole. Proceed by feeding the CT38-075 tubing through the final grommet and into the pump area. **NOTE: Stop feeding the tubing through the grommet once the tubing on the interior of the tank has had most of the slack taken up.**

POLYJOHN USA

PolyJohn Enterprises Corp.
2500 Gaspar Ave.
Whiting, IN 46394
Phone: 800-292-1305
Fax: 219-659-0625
www.polyjohn.com
info@polyjohn.com

POLYJOHN WORLDWIDE

PolyJohn (UK) Ltd.
Equinox 1 Audby Lane
Wetherby, England LS22 7RD
Phone: 44 (0) 1937-583333
Fax: 44 (0) 1937-583322
www.polyjohn.co.uk
sales@polyjohn.co.uk

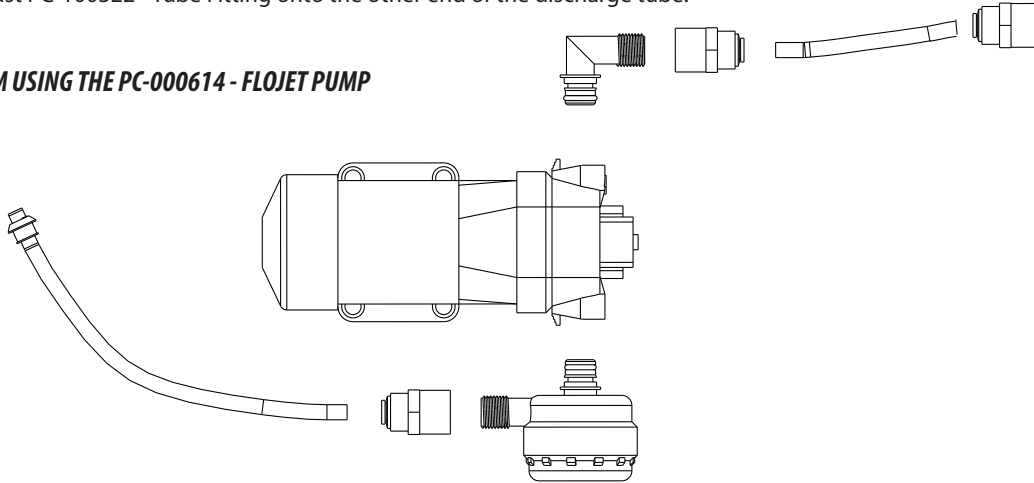
POLYJOHN CANADA

PolyJohn Canada
P.O. Box 2300
199 Forest Plain Rd.
Orillia, Ontario LV3 6S2
Phone: 800-465-9590
Fax: 705-325-8250
www.polyjohncanada.ca
info@polyjohncanada.ca

Step 4: Installing the PC-000614 - Flojet Pump

Locate PC-000614F - Bag of 4/Flojet Pump Feet and insert them up into the four holes of the pump plate on the bottom side of the pump. Place the PC-000614 - Pump on the tank shelf matching up the holes in the tank with the holes in the feet of the pump. **NOTE: Make sure that the arrow on the pump is pointing toward the center of the tank.** Fasten the pump in place using the (4) PC-000155 - Screws with (4) PC-000106 - Washers behind the head of the screws and (4) PC-000106 - Washers with (4) PC-000233 - Nylon Lock Nuts on the underside of the pump. **NOTE: It is suggested to use Teflon plumbers tape to seal all plumbing connections.** Screw one of the PC-100322 - Tube Fittings onto the threaded end of the PC-000306 - 40 Mesh Stainless Steel Filter. Remove the blue cap from the intake port of the pump and insert the filter (the non-threaded end with the o-ring) into the **Intake** port of the pump. **IMPORTANT: Make sure to press the tab on the pump against the fitting to lock in place.** Make sure the end of the CT38-075 - Tube is cut square and then press it into the tube fitting. Remove the blue cap from the **discharge** port of the pump and insert a PC-100323 - Elbow into the port. **IMPORTANT: Make sure to press the tab on the pump against the elbow to lock in place.** Screw one of the PC-100322 - Tube Fittings onto the PC-100323 - Elbow. Make sure the CT38-030 - Discharge Tube is cut square then press it into the PC-100322 - Tube Fitting. Push the last PC-100322 - Tube Fitting onto the other end of the discharge tube.

STEP 4 DIAGRAM USING THE PC-000614 - FLOJET PUMP



Step 5: Mounting the Time Delay Relay (TDR)

Center the PC-000634 - Time Delay Relay (TDR) over the **inner** 5/32" hole on the tank shelf (the one closest to the center of the tank) and secure it into place using (1) PC-100137 - Screw, (1) PC-100138 - Nylon Lock Nut, and (2) PC-000106 - Washers (1 behind the head of the screw and the other on the inside of the tank). Make a knot in the GFCI Cord in the area of the cord just below where the wires come out of it. Wrap the PC-100143 - Nylon Loop Strap around the cord just below the knot (in the area where it rests on the tank in the location of the **outer** 5/32" hole). Centering the mounting hole of the loop strap, rivet it into place using (1) PC-000110 - Rivet and (2) PC-000111 - Washers (1 washer on the topside of the loop strap behind the head of the rivet and the other inside the tank).

Step 6: Time Delay Relay/Pump Wiring

Connect the black wire with the female flag connector (located at the circular end of the pump) onto the "N.O." tab on the TDR. Locate the black wire with the female flag connector at the square end of the pump and plug it onto the "Input" tab on the TDR.

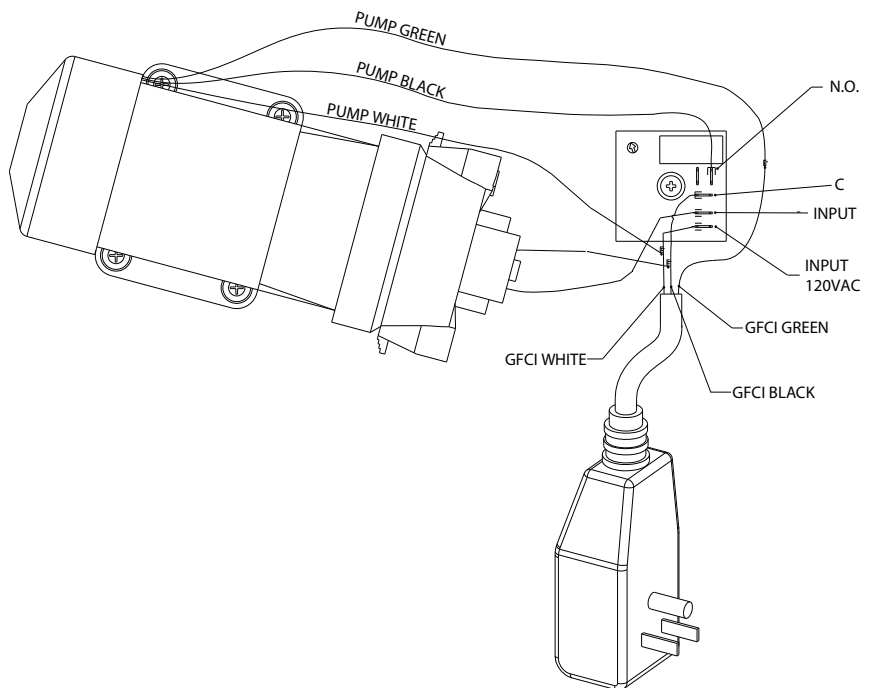
Step 7: Time Delay Relay/GFCI Wiring

Cut the flag connector off of the black wire on the GFCI plug and replace it with a PC-000662 - Female Flag Connector and then connect it to the "C" tab on the TDR. Take the white wire on the GFCI plug out of the crimp-on wire nut and attach a female flag connector to it and plug this wire onto the "Input 120 VAC" tab on the TDR. Snap a PC-000663 - Wire Tap onto the black GFCI plug wire and one onto the white GFCI plug wire. Attach the two pump wires with the insulated male connectors to the wire taps. **NOTE: Make sure you match the white pump wire to the white GFCI plug wire, and do the same for the black wires.** Crimp on a PC-000659 - Insulated Male Spade Connector onto the green GFCI plug wire and attach it to the female flag connector on the green wire coming out of the pump.

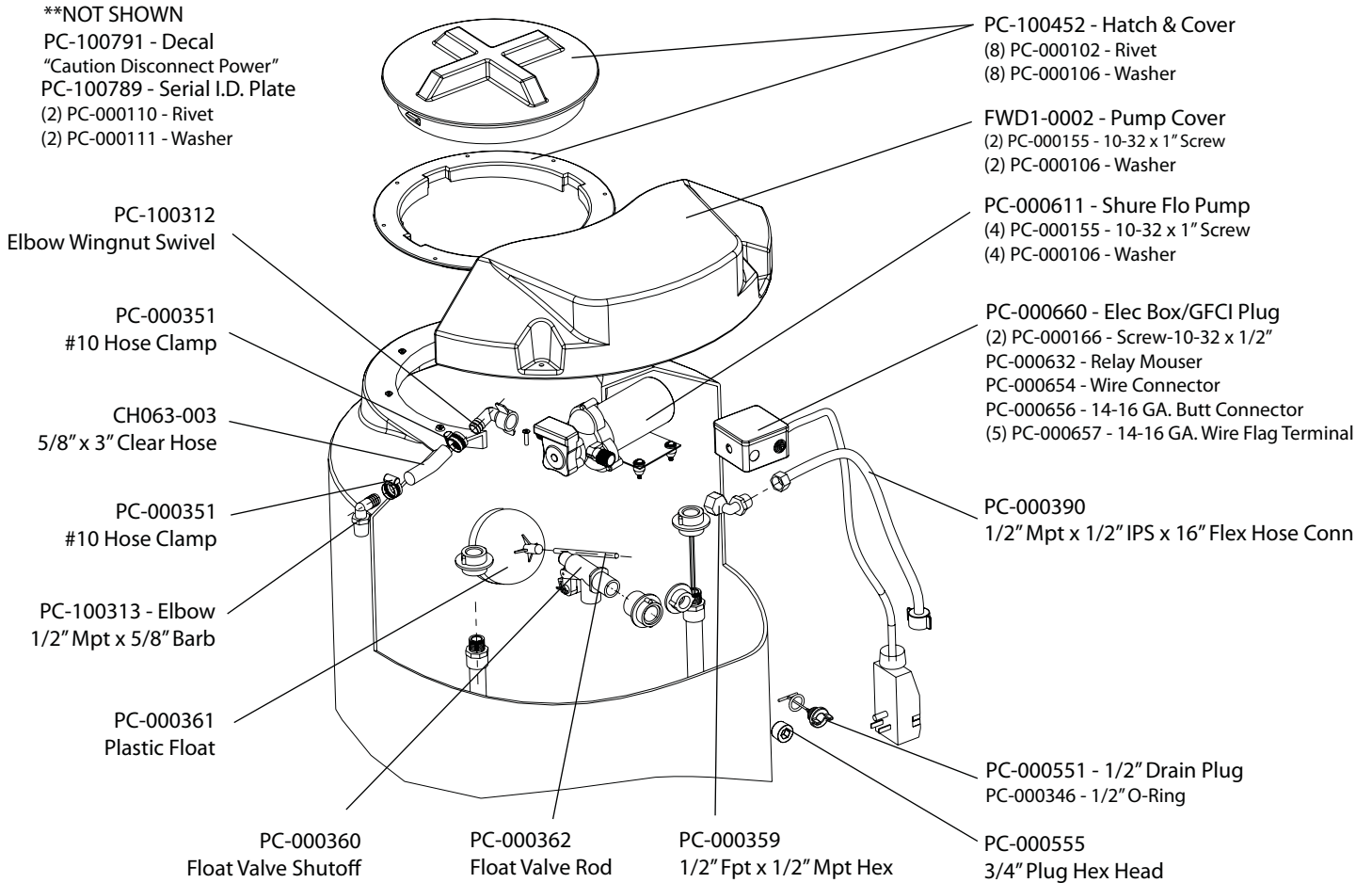
NOTE: Five minutes is the suggested setting for the Time Delay Relay. Adjust accordingly from thirty seconds up to ten minutes, depending upon usage.

Step 8: Replacing the Cover

Screw the (2) PC-000551 - Plugs with (2) PC-000346 - O-Rings into each of the welded-in pipe fittings on the tank shelf. Replace the cover using (2) PC-000155 - Screws with (2) PC-000106 - Washers. **NOTE: The electrical cord is routed where the water line used to come out and the water line is routed where the electrical cord used to come out.** The upgrade of your FWD1-1000 using the Flojet Pump is now complete.

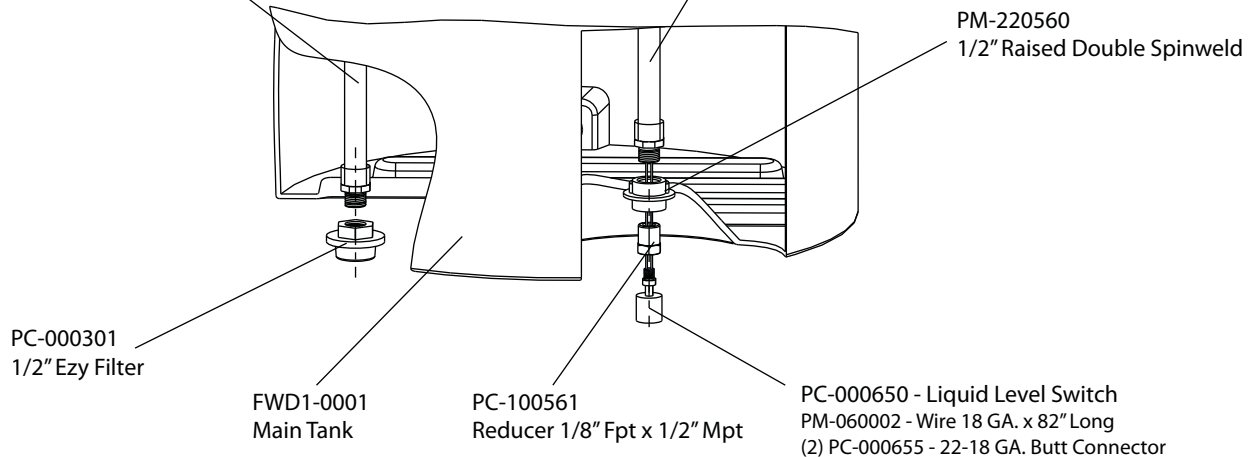


FWD1-1000 - Fresh Water Delivery System Prior to Conversion



CP050-40052
 1/2" Sch 40 x 52" Long PVC Pipe
 (2) PC-100562 - Coupler 1/2" Sckt x 1/2" Mpt

CP050-40050
 1/2" Sch 40 x 50" Long PVC Pipe
 (2) PC-100562 - Coupler 1/2" Sckt x 1/2" Mpt



FWD2-0501 - Fresh Water Delivery System Using the Flojet Pump

****NOT SHOWN**

- PC-100791 - Decal - "Caution Disconnect Power"
- PC-100793 - Decal - Caution Fill/Pump/TDR

