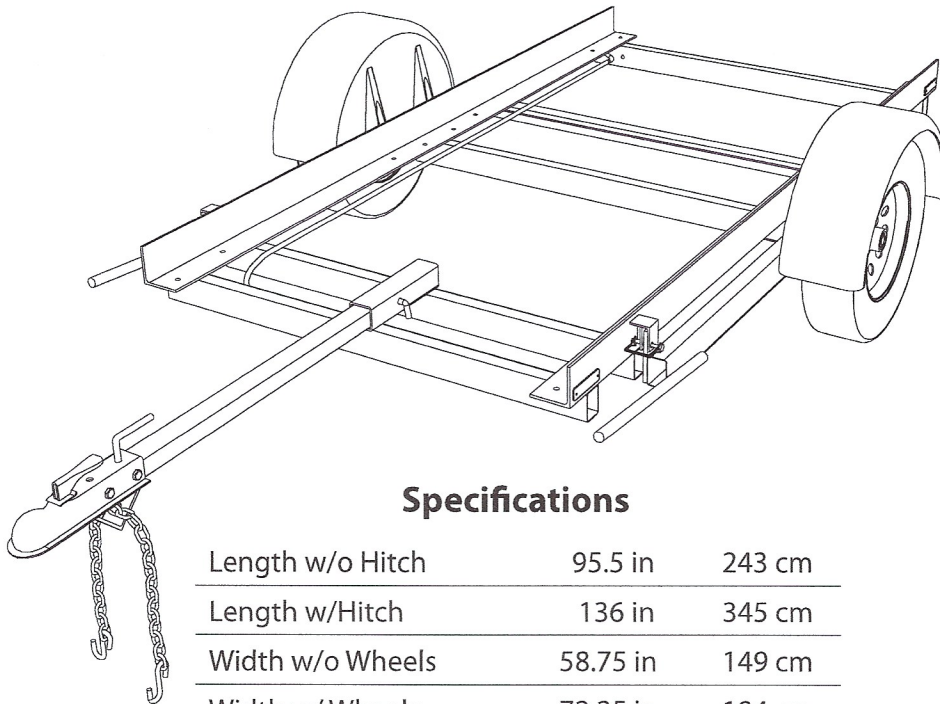


Fleet Double Trailer Chassis TU02-1001 Technical Information

General Overview

The Fleet Double Trailer - TU02-1001 is equipped with a drop axle and removable tongue, which are both galvanized after fabrication to minimize rusting. Tail lamps, reflectors and electrical hookup are included. Shipped unassembled.



Specifications

Length w/o Hitch	95.5 in	243 cm
Length w/Hitch	136 in	345 cm
Width w/o Wheels	58.75 in	149 cm
Width w/ Wheels	72.25 in	184 cm
Height w/o Wheels	7.5 in	19 cm
Height w/ Wheels	25 in	64 cm
Weight w/o Units	450 lb	204 kg
Ball Size	2 in	5.08 cm
GVWR/GAWR	1700 lbs	771 kg

POLYJOHN USA

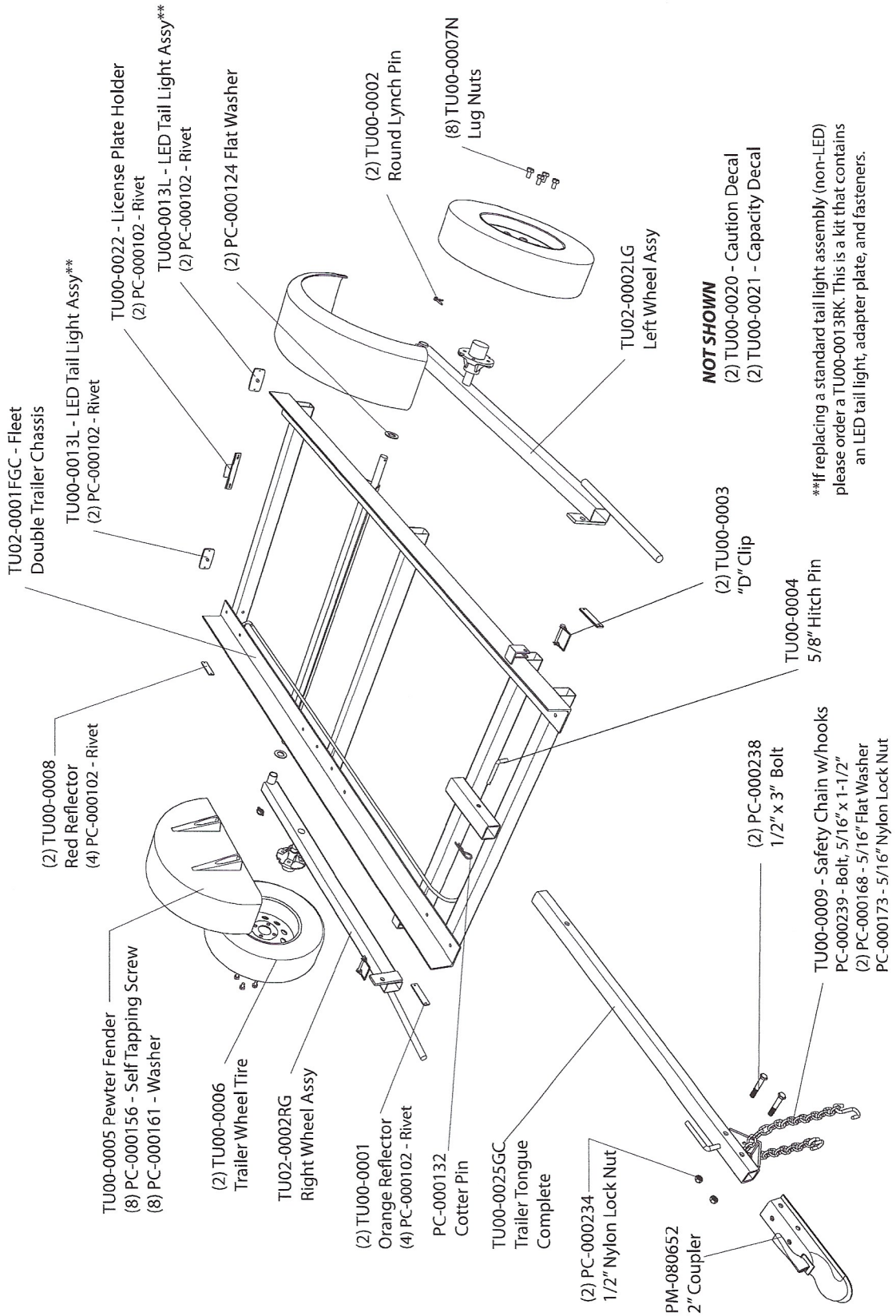
PolyJohn Enterprises Corp
2500 Gaspar Ave.
Whiting, IN 46394
Phone: 800-292-1305
Fax: 219-659-0625
www.polyjohn.com
info@polyjohn.com

POLYJOHN WORLDWIDE

PolyJohn (UK) Ltd.
Equinox 1 Audby Lane
Wetherby, England LS22 7RD
Phone: 44 (0) 1937-583333
Fax: 44 (0) 1937-583322
sales@polyjohn.co.uk

POLYJOHN CANADA

PolyJohn Canada
P.O. Box 2300
199 Forest Plain Rd.
Orillia, Ontario LV3 6S2
Phone: 800-465-9590
Fax: 705-325-8250
info@polyjohncanada.ca



**If replacing a standard tail light assembly (non-LED) please order a TU00-0013RK. This is a kit that contains an LED tail light, adapter plate, and fasteners.

Assembly Instructions

Step 1: Remove the cotter pin from the 5/8" hitch pin and pull the wires out of the tongue assembly mount.

Step 2: Insert the tongue assembly into the tongue assembly mount. Line up the holes and insert the hitch pin and secure in place with the cotter pin.

Left Wheel Assembly to Trailer Chassis:

Step 3: Pull up the ring of the round lynch pin and remove from the left side axle (*making sure to leave the PC-000124 flat washer on the axle*).

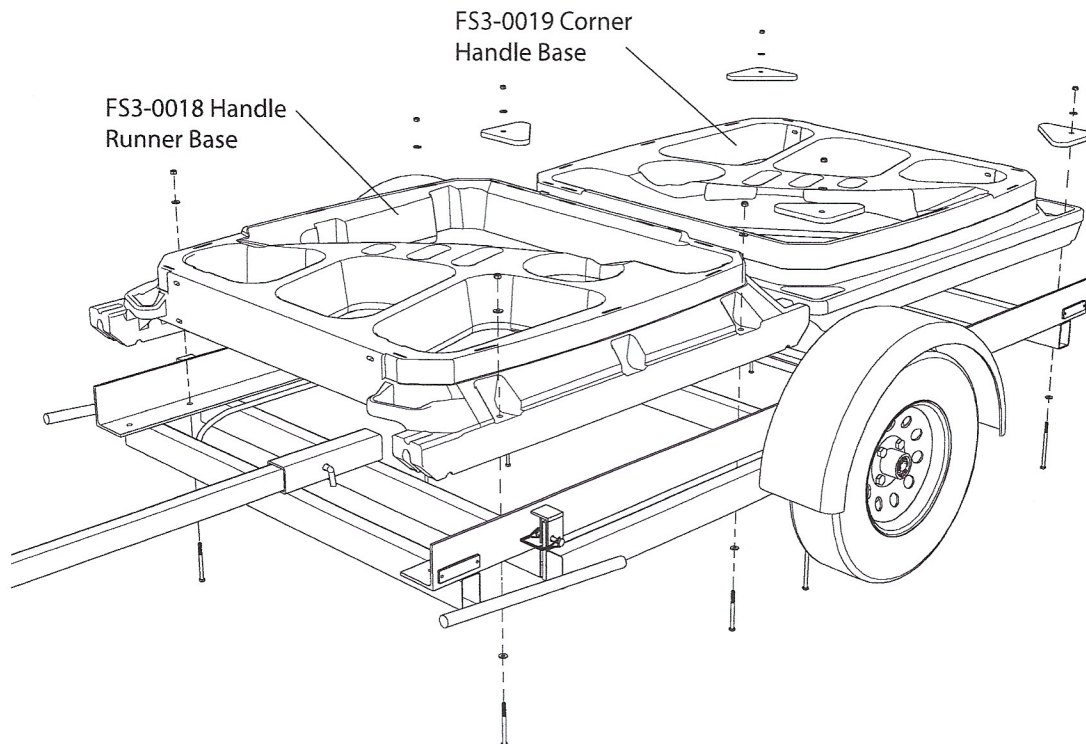
Step 4: Insert the 1-1/4" tube (*located on the arm of the left wheel assembly*) onto the left side axle. Reinsert the lynch pin into the hole of the axle and push the ring down to secure.

Repeat Steps 3 & 4 for the Right Side Wheel Assembly to the Trailer Chassis.

The units may now be loaded onto the trailer (follow the instructions below).

Step 5: Remove the D Clip from the left side of the chassis. Pull the arm of the wheel assembly down and out clearing the hold down clip. While pushing against the chassis, pull the arm up and insert the flat bar of the wheel assembly up into the slot of the armlock (*lining up the hole of the flat bar with the one in the armlock*). Insert the D clip through the holes securing in place.

Repeat Step 5 for the Right Side Wheel Assembly to the Trailer Chassis.



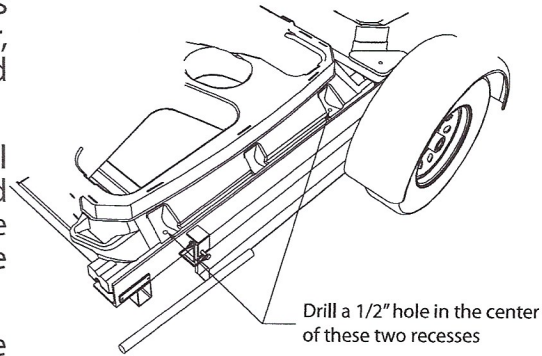
Loading Units onto Chassis:

The trailer must be in the lowered position before loading the units onto the trailer. Load the units onto the trailer facing back to back. Raise the trailer back up to continue.

For units with the FS3-0018 Handle/Runner Style Base

Step 1: With the ends of the runners touching in the center of the trailer, center both units front to back and side to side on the trailer.

Step 2: Using a drill with a 1/2" bit, drill a hole in the center of the front and rear side recesses on either side of the base. Drill only through the top of the base.



Step 3: From the underside, using the holes in the trailer as a guide, drill up through the holes located below the holes just drilled in the top of the base.

Step 4: Bolt the units in place by placing a flat washer over the head of the 3/8" x 4" bolts included. Insert the bolt through the bottom hole of the trailer and through the top hole in the base. Place another flat washer and a 3/8" nylon lock nut loosely on the top side of the bolt. Repeat this for all the other holes. Once all the bolts have been installed, tighten them all in place.

For units with the FS3-0019 Corner Handle Style Base

Step 1: With the ends of the runners touching in the center of the trailer, center both units front to back and side to side on the trailer.

Step 2: Place the corner hold down plates (included) over the corners of the bases and bolt in place using the 3/8" x 5-1/2" long bolts with washers and 3/8" nylon lock nuts. Be sure all bolts are tightened down before transporting the trailer and units.

Please reference your vehicle's "Owners Manual" for guidelines on proper towing connections.

THANK YOU FOR PURCHASING POLYJOHN PRODUCTS!

Look for us on the Web @ www.PolyJohn.com

TU02-1001 Fleet Double Trailer
August 2015
Page 4 of 4