

# LIFTING SLING

## PRODUCT INSTRUCTIONS



**POLYJOHN**<sup>®</sup>  
there when you need us



**NOTE:** We recommend reading through the entire Assembly Instructions prior to proceeding with use, service or maintenance.

# PRODUCT SPECIFICATIONS

LIFTING SLING  
MS02-1000



DIMENSION	IMPERIAL	METRIC
Clearance Height when attached to Unit	104 in	264 cm
Legs Can Extend to length of the Unit	48 in	122 cm
Width of Lifting Arm	47.75 in	121 cm
Sling Set Weight	45 lbs	20.41 kg
Lifting Capacity	1000 lbs	453.59 kg

**NOTE:** All dimensions are subject to change due to environmental factors. All materials, including resin, pigments and additives used to make the plastic components as well as the plumbing components that come in contact with the fresh water are U.S. FDA food grade compliant.

The MS02-1000 Lifting Sling, made of a no rust galvanized steel. Designed to move most portable restrooms around a construction site. Shipped with the MS01-0200 - Small Parts Bag which includes the necessary parts for easy assembly.

---

## SAFE HANDLING INSTRUCTIONS

1. This unit is made to lift portable restrooms only. It has a lifting capacity of 1000 lbs. This unit was designed to lift PolyJohn brand portable restrooms. If using this product with a different portable restroom manufacturer, the unit must be weighed to insure that the 1000 lb. lifting capacity is not exceeded. The unit must not be used to lift anything or anyone inside of the portable restroom.
2. Only one (1) sling set/unit to be lifted by one (1) lifting device at a time.
3. The base of the portable restroom and the lifting sling must be visually inspected prior to any lift.
4. All lifting must be done from the center apex of the sling cross bar.
5. Any bent or damaged parts must be reported to supervisor immediately and taken out of service.

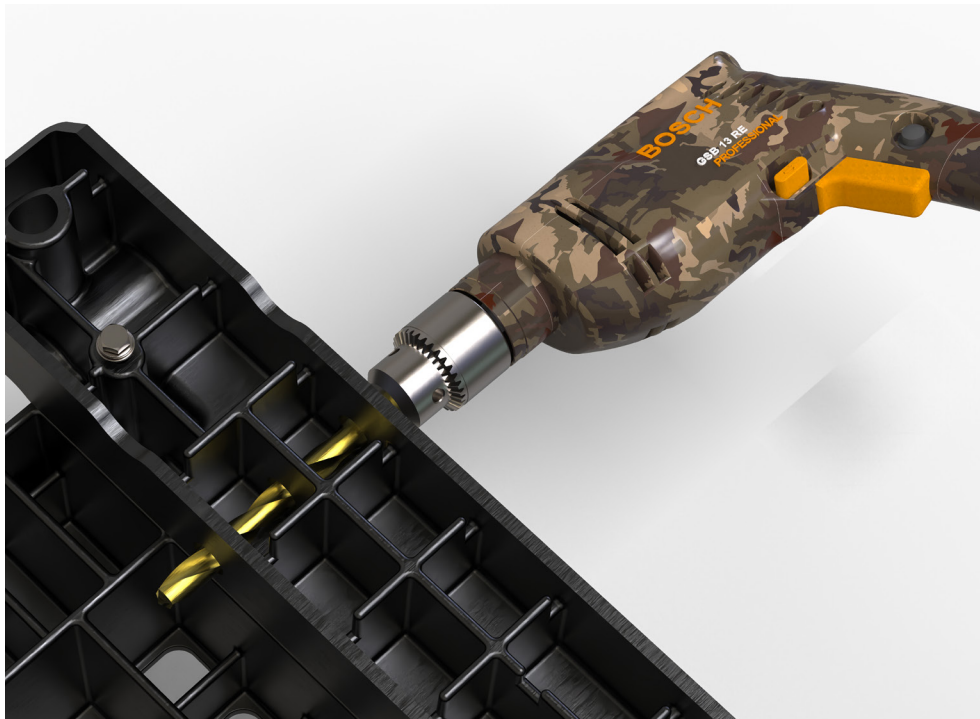
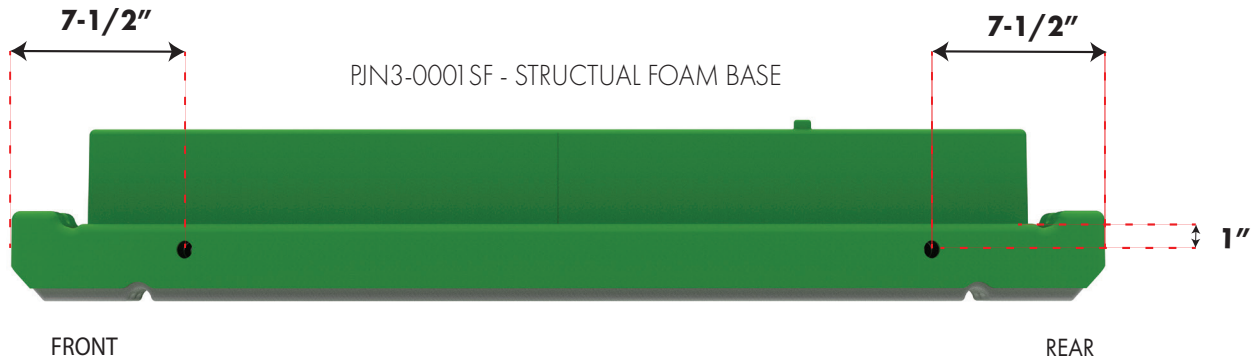
**FAILURE TO FOLLOW THESE INSTRUCTIONS COULD RESULT IN INJURY OR DEATH**

# PRODUCT INSTRUCTIONS

## LIFTING SLING MS02-1000

Note: Prior to fitting the sling set, be sure that the unit is clean and empty of all waste and fresh water.

**Step 1.** For PJN3 units with a STRUCTUAL FOAM base (black color), lay the unit on it's back. Measure 7-1/2 inches from the end of the runner and make a mark on the side of the runner. Measure 1 inch from the top of the runner and make a mark on the side of the runner where it intersects the previous mark. Drill a 1 1/16" hole through side walls and inner rib of the runner. Repeat this step for the other 3 locations. When all 4 holes have been drilled, stand the unit upright.



**Step 2.** Attach one end of the MS01-0002G - Lifting Arm to the looped-end of one of the MS01-0001G - Sling Legs. Repeat for the other end of arm and leg.

**Step 3.** Push the Portable Unit between the sling legs.

**Step 4.** Insert one foot of a sling leg through the hole in the runner. Place a PC-000129 washer over the foot of the sling leg. Follow by inserting a PC-000132 hairpin cotter into the hole of the foot and push until the foot is in the middle opening of the hairpin cotter to lock in place. Repeat this for the remaining sling legs.

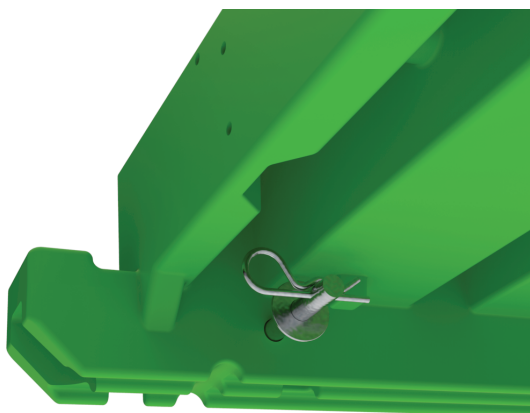
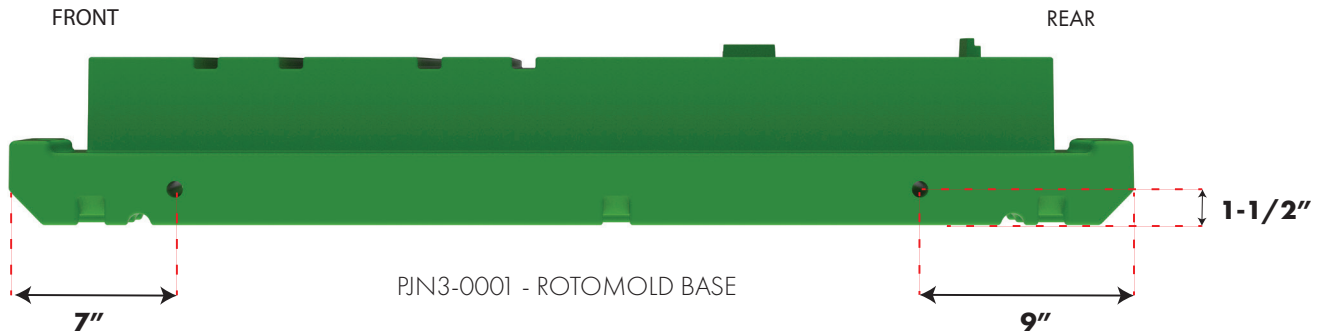
**Follow steps 2-4 in reverse order to detach lifting sling.**

# PRODUCT INSTRUCTIONS

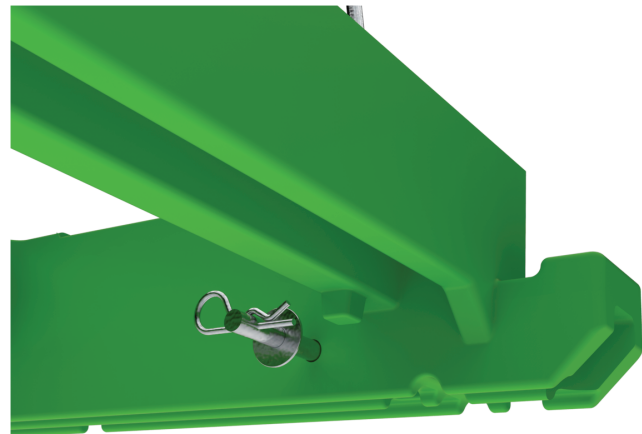
## LIFTING SLING MS02-1000

Note: Prior to fitting the sling set, be sure that the unit is clean and empty of all waste.

**Step 1.** For PJN3 units with a rotomolded plastic base, lay the unit on it's back. Measure up 7" from the ground and make a mark on the side of the runner. Measure up 1-1/2" from the bottom of the runner of the base and make a mark right where the previous mark was made. Drill a 11/16" hole through one wall of the base in the location marked. Repeat this step for the inside surface of the runner (see diagram to the left). Repeat this procedure for the outside and inside surfaces of the other runner. When all 4 holes have been drilled, turn the unit over, laying it on it's front, and repeat these steps.



**FRONT OF UNIT**



**REAR OF UNIT**

**Step 2.** Stand the unit upright.

**Step 3.** Attach one end of the MS01-0002G - Lifting Arm to the looped-end of one of the MS01-0001G - Sling Legs. Repeat for the other end of arm and leg.

**Step 4.** Push the Portable Unit between the sling legs.

**Step 5.** Insert one foot of a sling leg through the hole in the runner. Place a PC-000129 washer over the foot of the sling leg. Follow by inserting a PC-000132 hairpin cotter into the hole of the foot and push until the foot is in the middle opening of the hairpin cotter to lock in place. Repeat this for the remaining sling legs.

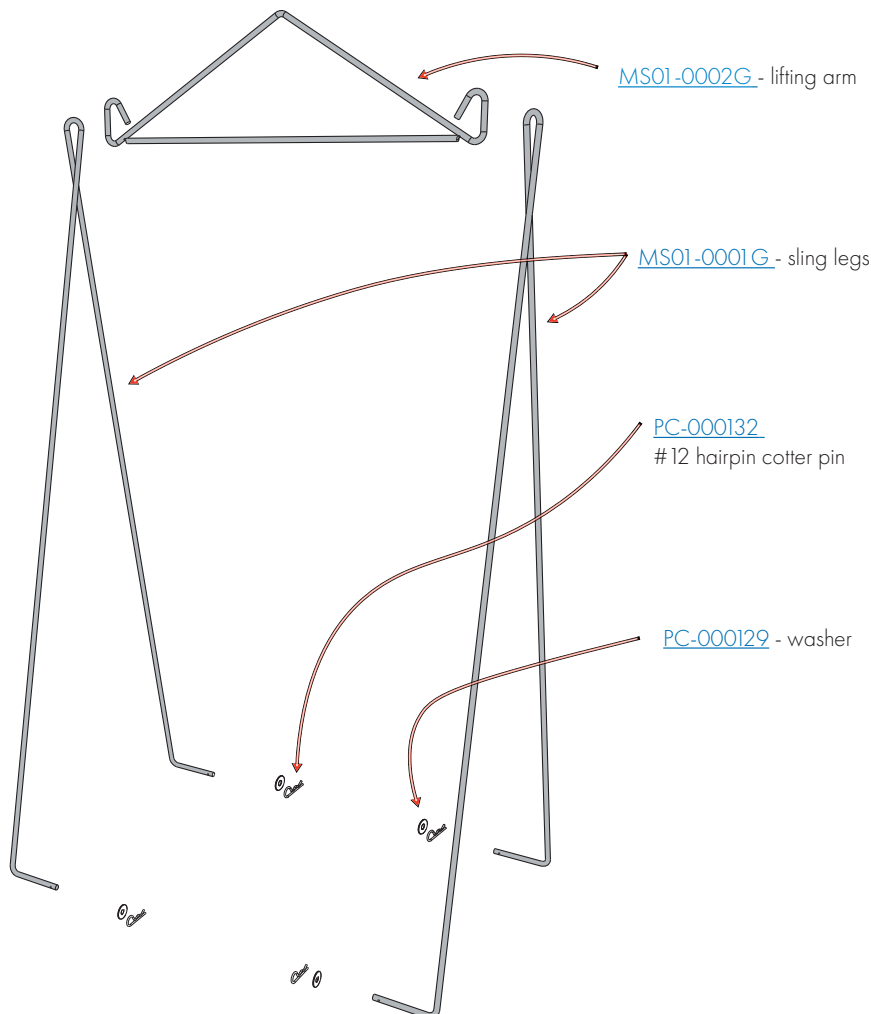
# PRODUCT INSTRUCTIONS

LIFTING SLING  
MS02-1000

## ATTACHING THE LIFTING SLING TO ALL OTHER UNITS

- For all skids whether plastic or structural foam, drill four 11/16" holes through the sides of the runners (two holes per runner). The ideal drill locations should be 5" in from each end of the runner and 2" from the bottom of the skid.  
NOTE: Before drilling check the inside of the runner for any obstructions and adjust drill locations accordingly.
- Attach one end of the MS01-0002G - Lifting Arm to the looped-end of one of the MS01-0001G - Sling Legs. Repeat for the other end of arm and leg.
- Push the Portable Unit between the sling legs.
- Insert one foot of a sling leg through the hole in the runner. Place a PC-000129 washer over the foot of the sling leg. Follow by inserting a PC-000132 hairpin cotter into the hole of the foot and push until the foot is in the middle opening of the hairpin cotter to lock in place.
- Repeat for the three other ends of the skid.

Follow steps in reverse order to detach lifting sling.



## RESTROOMS AND TOILETS

### POLYJOHN PORTABLE RESTROOMS LIMITED 3 YEAR PRODUCT WARRANTY

PolyJohn Enterprises Corp. warrants the major plastic parts of its portable restrooms (plastic front, wall panels, roof, and tank) against any breakage or other problems that prevent the PolyJohn portable toilet from functioning in accordance with usual practices used in the portable toilet industry and in their intended manner. This warranty covers any damages in material or workmanship for a total period of 3 years (36 months). This warranty extends only to the original purchaser of the PolyJohn portable restroom. Proof of purchase, serial numbers, and photos will be required.

## SINKS, TANKS, TRAILERS AND SANISTANDS

PolyJohn Enterprises warrants our sinks, tanks, trailers and sanistands from the date of purchase. Any misuse or abuse of our products or failure to properly follow recommended procedures shall void this warranty. The warranty is a 1 year limited warranty and a 90 day limited warranty for components thereof.

### What is Not Covered By Warranty

This warranty does not cover damage or failure contributed to or caused by: Not following PolyJohn assembly procedures, unauthorized modification, acts of God, mishandling, misuse, use of incompatible solvents or other damaging chemicals, vandalism or accident. In no event shall PolyJohn be liable for labor costs or for incidental or consequential damages.

For full details on PolyJohn's warranty policy, and to view instructions for submitting a claim please visit <https://www.polyjohn.com/warranty/>.

### Warranty Disclaimer

PolyJohn's terms of sale are FOB (Free on Board Shipping Point). Meaning buyer takes on responsibility once it leaves PolyJohn's shipping dock. The carrier is wholly responsible for any damage incurred during transit. Important notice: All concealed/non-notated damages must be reported within 5 business days of delivery (1st day is the day of delivery) as per the National Motor Freight Classification (NMFC) – Rule 300100 - for a damaged claim to be filed. Reporting after this time will void a claim.

In order to prevent warranty disputes follow these steps immediately when receiving your products:

Inspect the shipment immediately and insist that visible damages be indicated on your copy of the freight bill. If they are not noted on the freight bill it is very likely a claim will be denied.

Open the shipment if necessary, and inspect for any concealed damages.

If there are any damages that you cannot operate with you may refuse shipment. After you do this contact us immediately

### Filing Process for Warranty

PolyJohn reserves the right to request inspection of products for verification of defect, which may include returning some or all of the parts with shipping paid for by the purchaser. Once the items have been returned, inspected, and PolyJohn is found at fault shipping costs will be reimbursed. You may contact PolyJohn to arrange for return shipping if desired.

To file your warranty claim follow these steps:

1. Go to [polyjohn.com/warranty/](https://www.polyjohn.com/warranty/)
2. Fill out necessary contact information
3. Fill in invoice number, date of purchase, product, and product serial numbers.
4. Upload an images of affected products
5. Submit and someone will be in contact with you as soon as possible.

# OUR MISSION STATEMENT

“PolyJohn is a family owned, state of the art, plastics manufacturing company dedicated to providing its employees with a work environment committed to excellence, and its customers with innovative products, services and technology that meet or exceed their requirements.”

THANK YOU FOR PURCHASING POLYJOHN PRODUCTS!



**POLYJOHN**<sup>®</sup>  
there when you need us

---

POLYJOHN USA  
+1 800-292-1305  
Whiting, Indiana  
[www.polyjohn.com](http://www.polyjohn.com)

POLYJOHN INTERNATIONAL  
UNITED KINGDOM  
+44 (0) 1937-583333  
Yorkshire, England  
[www.polyjohn.co.uk](http://www.polyjohn.co.uk)

POLYJOHN CANADA  
+1 800-465-9590  
Oro Medonte, Ontario  
[www.polyjohn.ca](http://www.polyjohn.ca)  
[www.fr.polyjohn.ca](http://www.fr.polyjohn.ca)

POLYJOHN LATIN AMERICA  
+01 800-953-1307  
Chihuahua, Mexico  
[www.polyjohn.mx](http://www.polyjohn.mx)

POLYJOHN AUSTRALIA  
+61 7 3277 5727  
Brisbane, Australia  
[www.totalsanitationsolutions.com.au](http://www.totalsanitationsolutions.com.au)

POLYJOHN SOUTHERN AFRICA  
+27 (011) 615-3804  
Johannesburg, South Africa  
[www.polyjohn.co.za](http://www.polyjohn.co.za)

POLYJOHN NEW ZEALAND  
+64 (0)22 387 7142  
Auckland, New Zealand  
[www.polyjohn.co.nz](http://www.polyjohn.co.nz)

POLYJOHN SOUTH AMERICA  
+57 318 696 7744  
Bogotá, Colombia  
[www.polyjohn.com](http://www.polyjohn.com)

POLYJOHN INTERNATIONAL  
CZECH REPUBLIC  
+420 608 876 983  
Karlovy Vary, Czech Republic  
[www.polyjohn.eu](http://www.polyjohn.eu)